

### LIDAR MAPPING SERVICES

Aerial Analytics operates as a third-party provider to augment existing operations or as an out-sourced service provider for those organizations without in-house high resolution LiDAR capability.

### LIDAR MAPPING EQUIPMENT

Aerial Analytics deploys the **RIEGL miniVUX-1UAV** sensor with the APX-20 IMU/GNSS for direct geo-referencing to generate precise, 3-D data and models of natural and manmade environments.

### WE PROVIDE SOLUTIONS TO

*Natural Resource Producers*

*Government Agencies*

*Infrastructure Developers & Operators*

*Power Generating Utilities*

*Energy Providers*

*Architecture, Engineering & Construction companies*

*Surveyors & Environmental Engineers*

*Greenfield & Brownfield Developers*

*Landfill Owners / Operators*

---

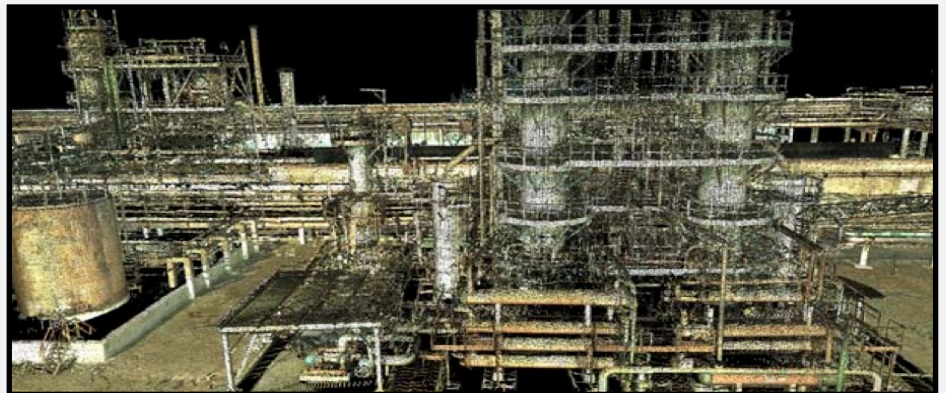
Aerial Analytics LLC  
7151 O'Kelly Chapel Rd.  
Suite 146  
Cary, NC 27519  
**TEL** (919) 417-2343

Aerial Analytics' high resolution engineering-grade sUAS LiDAR systems can play a key role in accurately creating a digital twin of man-made structures and natural terrain. With the ability to scan through forested canopies, our sUAS LiDAR systems can effectively generate 3D models and fully calibrated LAS files for further analysis in other software platforms such as AutoCAD, ENVI, ArcGIS, MicroStation or MAYA computer animation and virtual reality software.

---

### Sample Applications

- 3D Modeling
- Land Use & Urban Planning
- Utility Corridor Monitoring
- Transportation & Infrastructure Planning
- Mining and Resource Assessments
- As-Built Asset Mapping
- Floodplain Evaluation
- Greenfield / Brownfield Evaluation
- Golf Course Design & Renovation
- Coastline Mapping & Management
- AR / VR Data Collection
- Forestry & Biomass Management
- Construction Monitoring
- Powerline Mapping
- Land Monitoring & Categorization



To learn more about how we can augment your efforts with our LiDAR platform, **contact** us at [info@aerial-analytics.com](mailto:info@aerial-analytics.com) or call 919-417-2343.